

VPN INSTRUCTIONS FOR WINDOWS XP CLIENTS

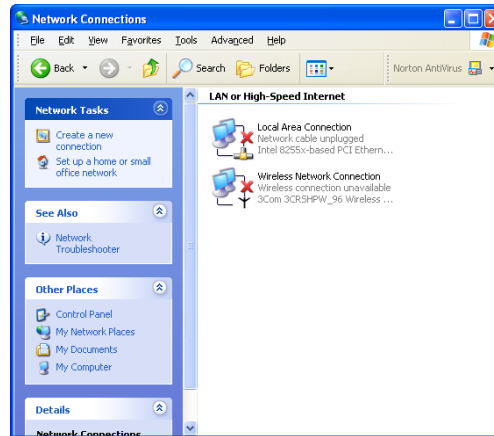
For 3Com card users only:

Before you begin you must download the updated card drivers from 3Com. Click the link below and enter the product number, 3CRSHPW196. Click Drivers, then click **shpw96drv.exe**, agree to the certificates and follow the 3Com directions for downloading.

Configuring the Connection

- **Insert wireless card**
- Click **Start → Connect to → Show All Connections**

The Network Connection window displays.



- Click **Create a new connection** located under Network Tasks

The Welcome to the New Connection Wizard displays.



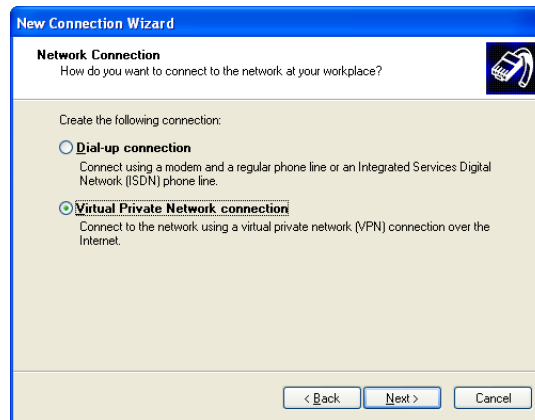
- Click **Next** to continue

The Network Connection Type window displays.



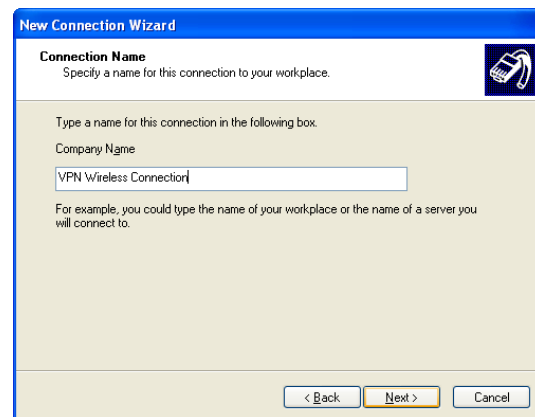
- Click the button to select **Connect to the network at my workplace**
- Click **Next**

The Network Connection window displays.



- Click the button to select **Virtual Private Network connection**
- Click **Next**

The Connection Name window displays.



- In the text box labeled *Company Name*, type **VPN Wireless Connection**
- Click **Next**

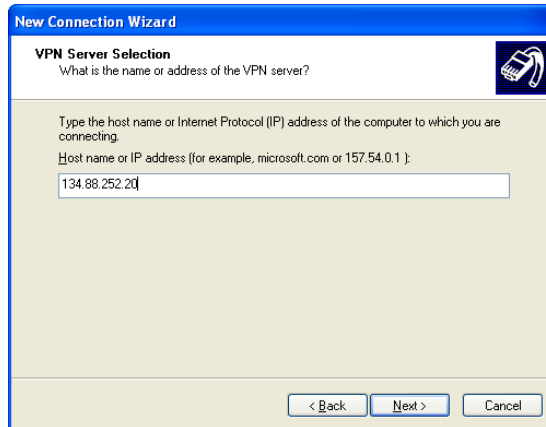
!! STOP !! IMPORTANT INFORMATION!

If the screen below *VPN Server Selection* is **NOT** displayed on your terminal **DO NOT** type in the *Host name or IP Address*.

If your notebook has never had a network connection, a different screen may display. This screen may request information regarding either a DHCP or IP number to establish your connection.

If this should occur select **DHCP**, then click **Next**.

The VPN Server Selection window displays.



- Under the *Host name or IP address*: type **134.88.252.20**
- Click **Next**

The Completing the New Connection Wizard window displays.



- Check the box **Add a shortcut to the connection to my desktop**
- Click **Finish** (The connection window pops up)**

**The connection window is also invoked when double-clicking on the desktop shortcut

Connecting to the VPN

The Connect Wireless VPN Connection dialog box displays.



- Type **Username** and **Password**. Check **Save Password**, if you want
- Click **Connect**

The connection progress is shown as follows:

Verifying username and password.



Registering your computer on the network




VPN Wireless Connection is now connected.



- Click **OK**

As an option, the user can select the box next to ***Do not display this message again*** to avoid seeing this window the next time a connection is established successfully.

A connection icon will also be displayed on the taskbar  (lower right-hand corner) every time the user connects successfully.

If you have any problems configuring the connection, please contact the IT Service Center at x8790.
