

VPN INSTRUCTIONS FOR WINDOWS VISTA BUSINESS CLIENTS

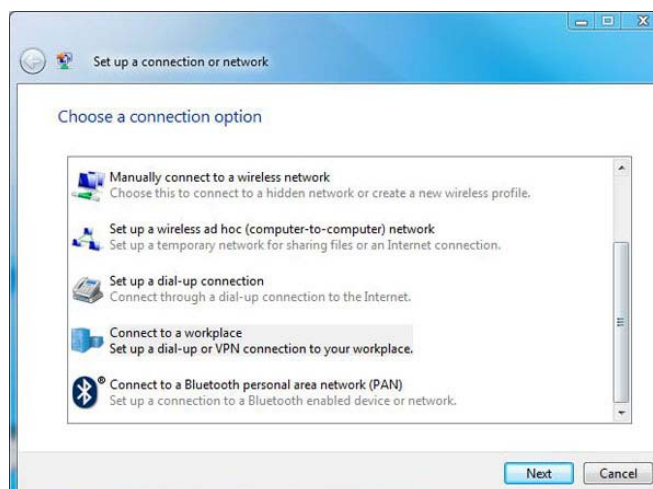
- Click Start Button & Click Connect To.

The Connect to a network window displays.



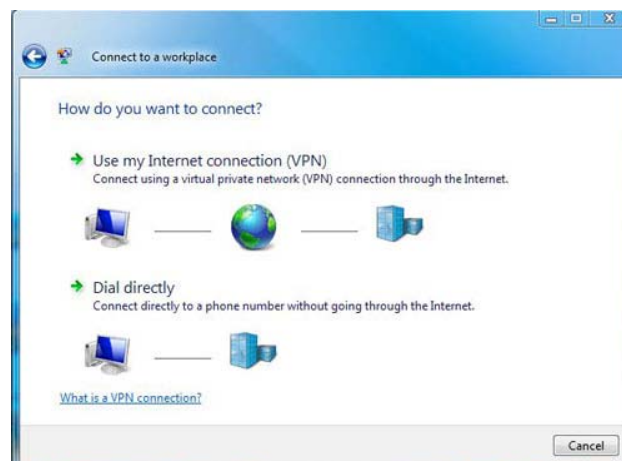
- Click Set up a connection or network.

The Network Connection option window displays.



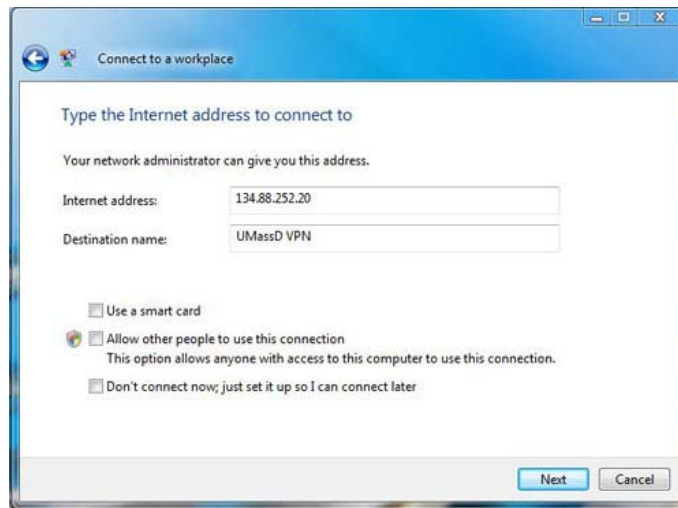
- Scroll down and select Connect to a workplace & Click Next.

The Connect to a workplace window displays.



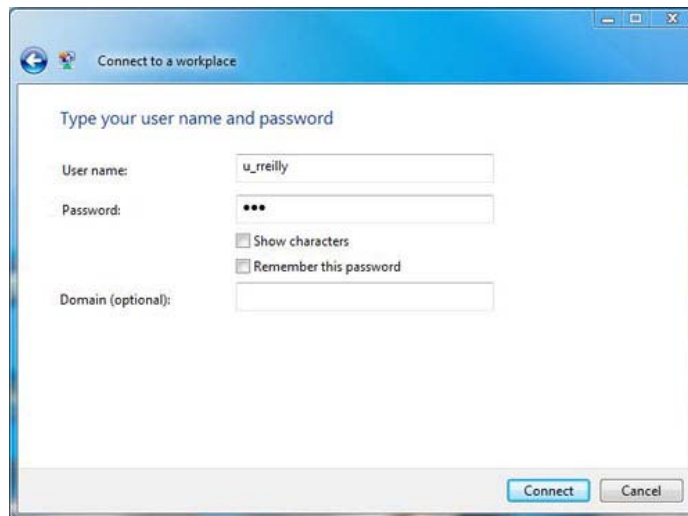
- Click Use my Internet connection (VPN).
- Click I'll set up an Internet Connection later.

Workplace address window displays.

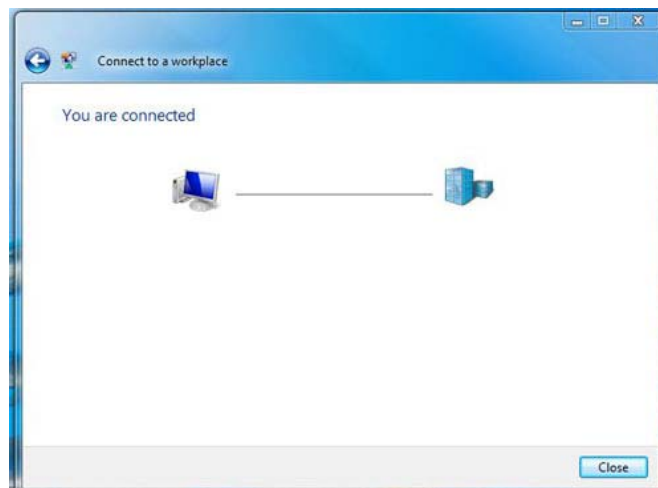


- Enter 134.88.252.20 for Internet Address.
- Enter UMassD VPN for Destination name & Click Next.

User name & password prompt displays.



Confirmation of connection displays.



Now that you have successfully added the UMassD VPN, you can now proceed to connect to the wireless network and then login to your VPN account.

- Click Start Button & Click Connect To.

Select a network to connect to option displays.



- Click UMassD and Click Connect & Connect anyway.
- Check Save this network and check Start this connection automatically, then Click Close.
- Click Start Button & Click Connect To.
- Click UMassDVPN and click Connect.
- Once connected Click Close.

If you have any problems configuring the connection, please contact the IT Service Center at x8790.