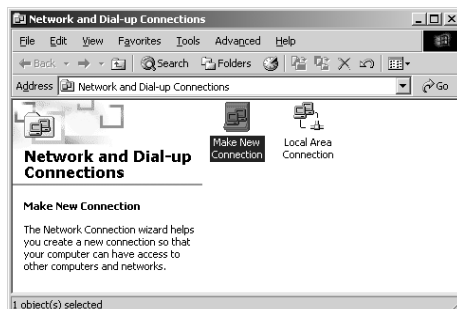


VPN INSTRUCTIONS FOR WINDOWS 2000 CLIENTS

Configuring the Connection

- Insert wireless card
- Click Start → Settings → Network and Dial Up Connections

The Network and Dial-up Connection window displays.



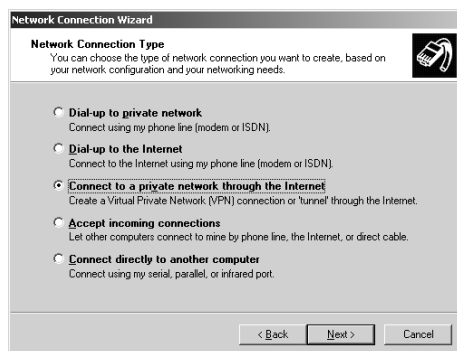
- Double-click the **Make New Connection** icon

The Welcome to the New Connection Wizard displays.



- Click **Next**

The Network Connection Type window displays.

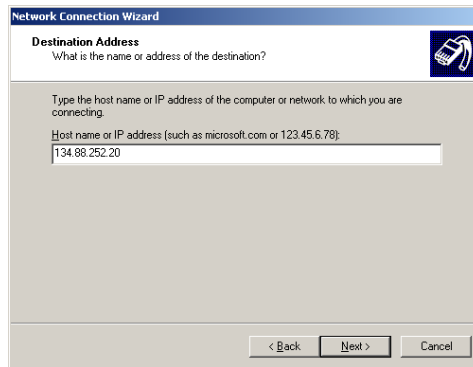


- Click the button to select **Connect to a private network through the Internet**
- Click **Next**

!!STOP!! If the screen below *VPN Server Selection* is **NOT** displayed on your terminal **DO NOT** type in the *Host name or IP Address*.

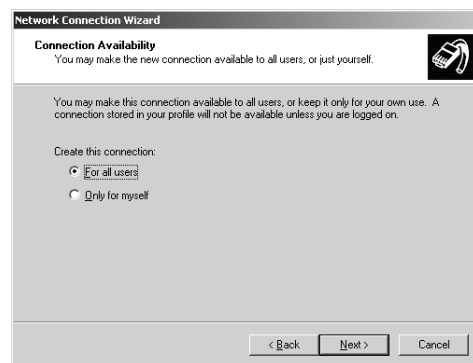
If your notebook has never had a network connection, a different screen may display. This screen may request information regarding either a DHCP or IP number to establish your connection. If this should occur select **DHCP**, then click **Next**.

The Destination Address window displays.



- Under the *Host name or IP address*: type **134.88.252.20**
- Click **Next**

The Connection Availability window displays.



- Select **For all users**
- Click **Next**

The Completing the Network Connection Wizard window displays.



- In the box labeled *Type the name you want for this connection:*, type **VPN Wireless Connection**
- Check the box **Add a shortcut to the connection to my desktop**
- Click **Finish** (The connection window pops up)**

**The connection window is also invoked when double-clicking the desktop shortcut

Connecting to the VPN

The Connect Wireless VPN Connection dialog box displays.



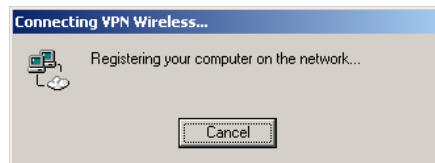
- Type **Username** and **Password**. Check the **Save Password**, if you want
- Click **Connect**.

The connection progress is shown as follows:

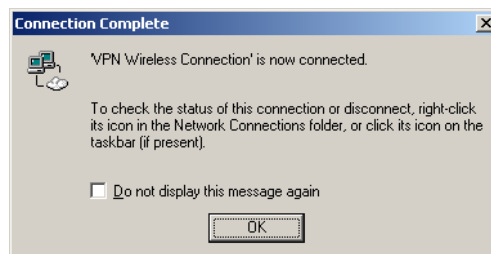
Verifying username and password.



Registering your computer on the network ...




VPN Wireless Connection is now connected.



- Click **OK**

As an option, the user can select the box next to ***Do not display this message again*** to avoid seeing this window the next time a connection is established successfully.

A connection icon will also be displayed on the taskbar  (lower right-hand corner) every time the user connects successfully.

If you have any problems configuring the connection, please contact the IT Service Center at x 8790.